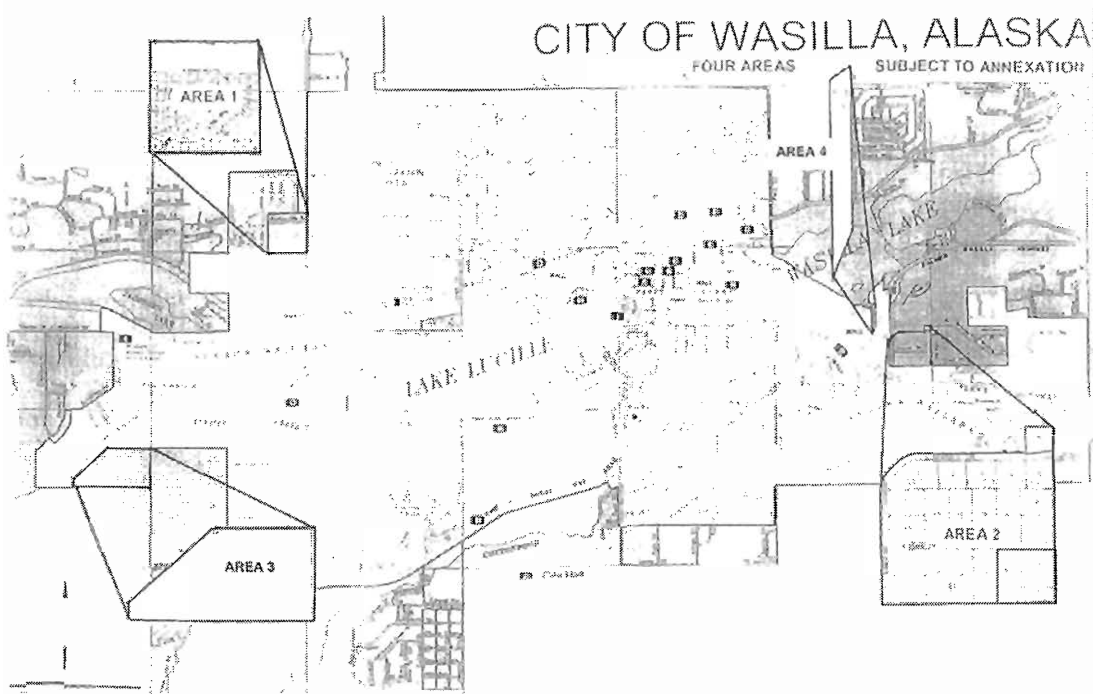
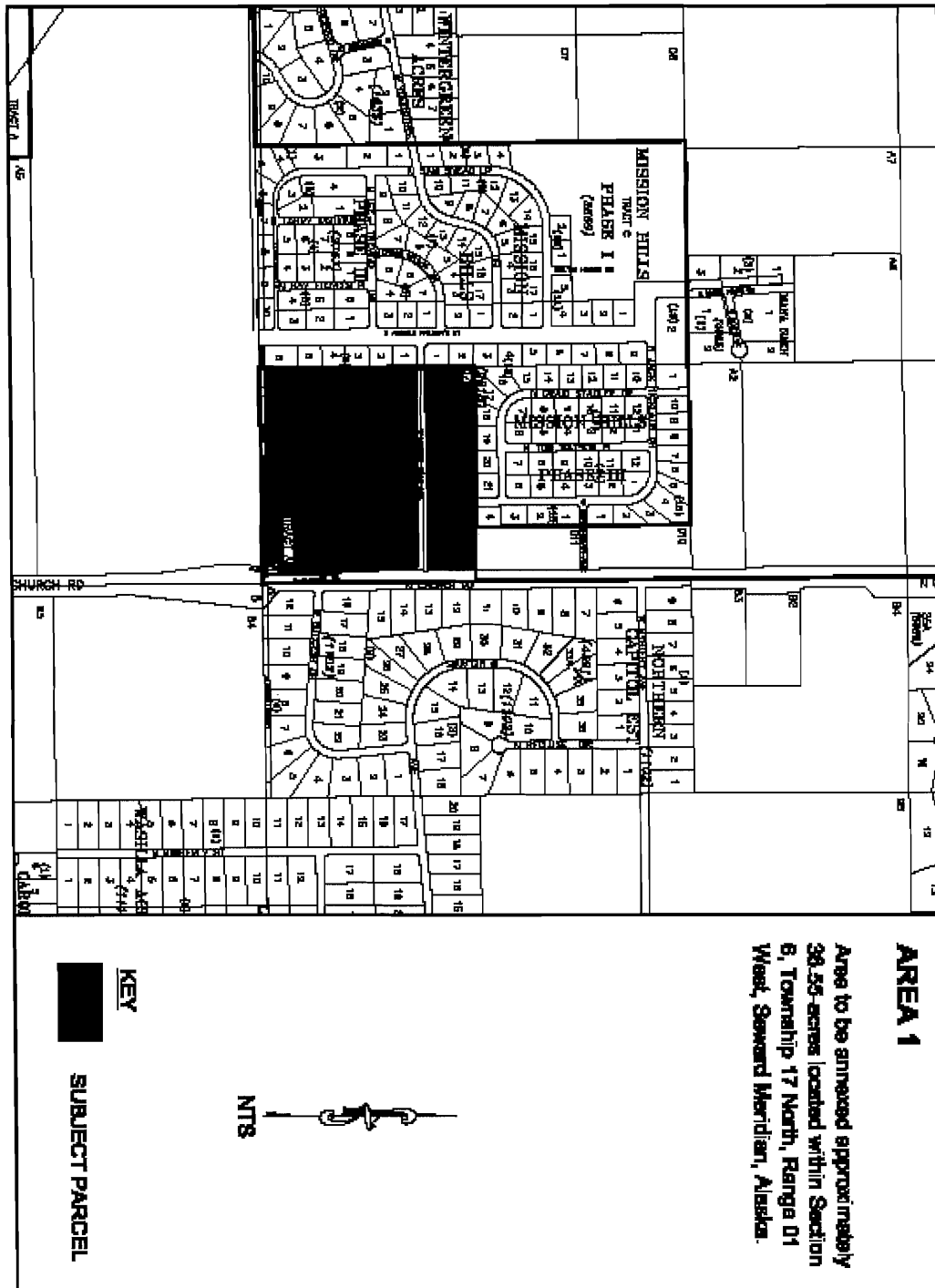


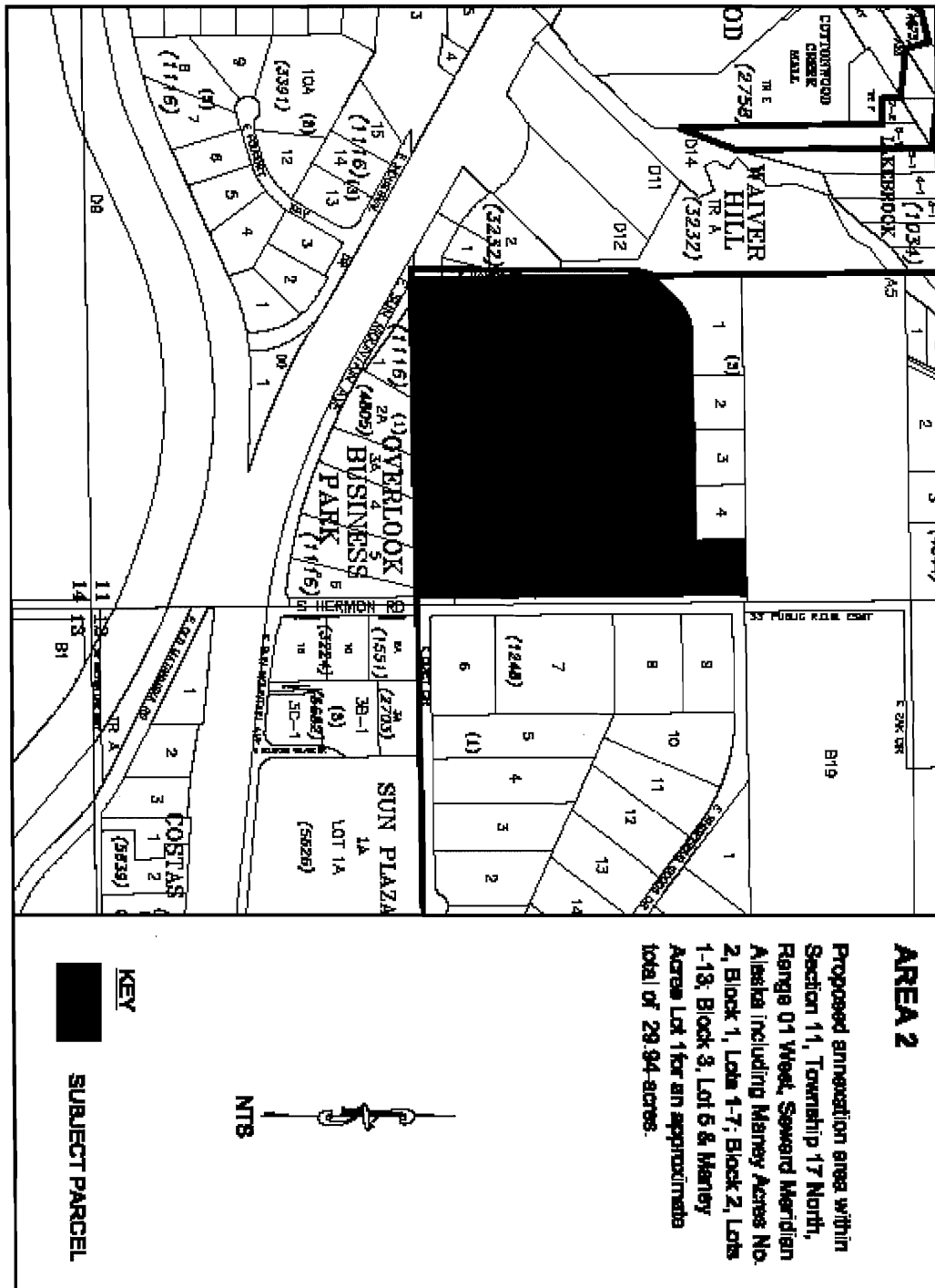
### EXHIBIT C MAPS AND PLATS

A map showing the existing boundaries of the City and the boundaries of the territory proposed for annexation are presented in this Exhibit. Any plats required by the Alaska Department of Commerce, Community, and Economic Development to demonstrate the accuracy of the legal descriptions in Exhibit A or Exhibit B are also included in this Exhibit. During a hearing before the Local Boundary Commission the commission approved a request from the City of Wasilla to relax provisions in 3 ACC 11.420(b)(6) to require only legal descriptions and maps but not plats.



**AREAS 1, 2, 3, 4 PROPOSED FOR ANNEXATION**





**AREA 2**

Proposed annexation area within Section 11, Township 17 North, Range 01 West, Seward Meridian Alaska including Marney Acres No. 2, Block 1, Lots 1-7; Block 2, Lots 1-13; Block 3, Lot 6 & Marney Acres Lot 1 for an approximate total of 29.94 acres.

**KEY**  
 **SUBJECT PARCEL**



