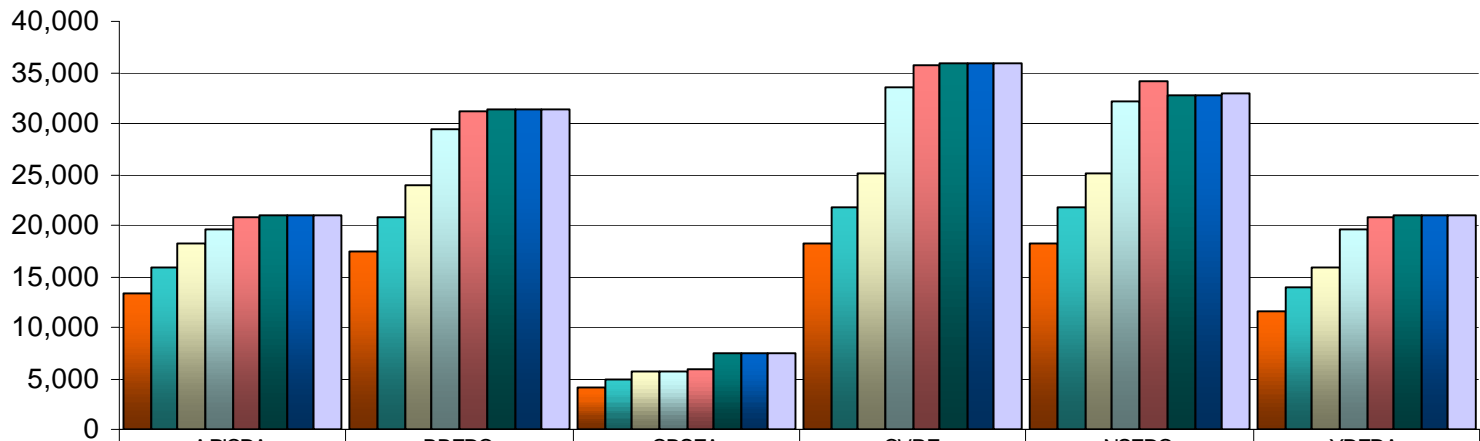


1998 - 2005 Pollock CDQ Allocations (MT)



	APICDA	BBEDC	CBSFA	CVRF	NSEDC	YDFDA
■ 1998	13,320	17,483	4,163	18,315	18,315	11,655
■ 1999	15,872	20,832	4,960	21,824	21,824	13,888
■ 2000	18,224	23,919	5,695	25,058	25,058	15,946
■ 2001	19,600	29,400	5,600	33,600	32,200	19,600
■ 2002	20,790	31,185	5,940	35,640	34,155	20,790
■ 2003	20,885	31,327	7,459	35,802	32,819	20,885
■ 2004	20,888	31,332	7,460	35,808	32,824	20,888
■ 2005	20,965	31,448	7,488	35,940	32,945	20,965