

**2005 Multi-Species CDQ  
Third Quarter Report  
(Public Version)**

for the

**Aleutian Pribilof Island  
Community Development  
Association**

November 1, 2005

## Table of Contents

I.	Quarterly Highlights	1
II.	Community Developments	
	A. Progress towards Goals, Objectives, Milestones	2-4
		Table 1-7 (pp. 20-29)
	B. Outreach	4
	C. Employment	
	1. Data Form	5
	2. Summary	5-7
	3. Resident Employment List	APP. 15
	4. Employment & Financial Benefactor List	APP. 16
	D. Training	
	1. Data Form	8
	2. Summary	8-10
	3. Education and Training Participant List	APP 17
III.	Administration	
	A. Board Activities	
	1. Change in Membership	10
	2. Decisions/Actions	10
	3. Minutes	APP. 14
	B. State of Alaska Reporting Compliance	10
	C. Amendment Status	11
	D. Corporate Organization Structure	11
IV.	Harvesting Report	
	A. Pollock & MSCDQ harvest Activities by Target Fishery	
	1. Pollock	12
	2. Pacific Cod	13
	3. Atka Mackerel	14
	4. Yellowfin Sole	15
	5. Crab	16
	6. Halibut	16
	7-8. Sablefish	17-18
	9. Pollock Harvested by Non-Pollock Vessels	19
	10. PSC Not Accrued Against PSQ Allocation	19
	11. Transfers	20
	B. Pollock & MSCDQ Harvested by Quarter and Y-T-D	
	1. Consolidated Summary of CDQ Harvested	21
	C. Compliance	22
	D. Other Fishing Issues	22

## I. Quarterly Highlights

APICDA's employment goal for 2005 is to provide at least 80 jobs for APICDA residents. By the conclusion of the third quarter, a total of 154 job positions (79 discrete individuals) had been filled by APICDA residents, generating wages of \$1,068,179 – over \$6,900 per job. Based on population, we employed just over fifteen percent (15%) of APICDA's community members through the third quarter of 2005.

Fifty-two community members were awarded APICDA's higher education scholarships during the third quarter of the year. Each scholarship is capped at \$5,000 for the school year. A total of \$234,376 in higher education scholarships were disbursed through the third quarter.

Early in the third quarter, APICDA purchased a 50% ownership in Barbara J L.L.C. The Barbara J, L.L.C. owns and operates the F/V *Barbara J*, a 109 foot vessel. The vessel operates in the Bering Sea/Aleutian Islands. The *Barbara J* harvests crab, Pacific cod and sablefish. In addition to its harvesting capabilities, the vessel also has extensive fishing rights which include shares of various Bering Sea crab species. APICDA's partner in this venture is Trident Seafoods

Management and staff spent approximately 289 "person days" in the APICDA region in the third quarter. The majority of these days consisted of servicing our eight wholly owned vessels for the upcoming fishing year and beginning several maintenance projects on existing plants and facilities.

Halibut CDQ fisheries in Atka and St. George started June. Both operations have provided job opportunities. In Atka, approximately twenty local residents are working at some capacity involved with the operation, while in St. George, over fifteen residents were involved.

APICDA harvested approximately ninety-nine percent of its pollock CDQ allocation through the third quarter. Our harvesting partners Starbound and Trident combined to conduct a clean efficient fishery.

APICDA harvested approximately one hundred percent of its Aleutian Island sablefish CDQ allocation in the third quarter. Bycatch was kept to an acceptable level. The F/V *Aleutian Spray* participated in the fishery.

APICDA assisted Senator Murkowski and United Fishermen's Association to develop the Alaska Fishing Relief Mission (AFIRM) to support the Gulf of Mexico fishing industry to recover from the effects of Hurricane Katrina. In addition to AFIRM, Ugludax Lodge, LLC donated a hunting trip to Nikolski. Funds from this donation will be distributed to support the Katrina Hurricane Relief Program.

APICDA contributed personnel and funds to assist the Safe Harbor Church of Akutan and Trident Seafoods to put on a basketball camp featuring Luke Ridnour (Seattle Super Sonics) and Run 2 Win Camp affiliates. Over thirty five children from Akutan, False Pass, Nelson Lagoon, Nikolski, St. George and Unalaska attended. The camp was held in Akutan on August 5<sup>th</sup> and 6<sup>th</sup>. It was well received and appreciated by all participants.

## **II. Community Development**

### **A. Progress Toward Goals, Objectives, Milestones**

The following is a review of the highlights from APICDA's goals, objectives, and milestones. See Tables 1 through 7 for a specific review of all milestones, by community.

1.) Employment: APICDA's employment goal for 2005 is to provide at least 80 jobs for APICDA residents. In the third quarter, a total of 67 job positions (22 discrete individuals) had been filled by APICDA and CDQ residents, generating wages of \$439,376.

2.) Training: APICDA's goal is to provide vocational education and training assistance for any resident who desires the opportunity or needs help. During the third quarter, six APICDA residents attended various vocational education or specialized training programs. Total funds requested and approved were \$14,111.

3.) Internships: APICDA seeks to place five to ten college students in the scholarship program in summer internships. The purpose of the college internship is to provide summer (or non-school time) employment opportunities to residents receiving higher education scholarships in fields of interest to them, APICDA and its subsidiaries. Through the third quarter, five individuals have been placed in the program.

4.) Education: Fifty-two individuals used APICDA higher education scholarships during the third quarter of the year. Each scholarship is in the amount of up to \$5,000 for the school year. A total of \$124,795 in higher education scholarships on behalf of APICDA residents has been spent the third quarter.

5.) APICDA Joint Ventures, Inc. (AJV) Activities: AJV activities during the third quarter consisted of overseeing the various subsidiary corporations, including Atka Pride Seafoods, Puffin Seafoods, L.L.C., Kayux Development, L.L.C., APICDA Vessels, Inc. (includes Farwest Leader), Nelson Lagoon Storage Company, L.L.C., Nazan Bay Inn, Starbound, Cannon Fish Company, Prowler, L.L.C., Ocean Prowler, L.L.C., Golden Dawn, L.L.C., Bering Pacific Seafoods, L.L.C., Ugludax, L.L.C., Barbara J, L.L.C., and MUM Alaska, L.L.C. AJV continued to discuss the formation of new joint venture corporations, and to review other investment opportunities.

6.) APICDA Vessels, Incorporated (AVI): AVI activities during the third quarter consisted of preparing and operating its fleet in the 2005 various fisheries. This includes the five AP boats, the *Bonanza*, the *Taty Z*, and the *Konrad 1*.

The *API*, *AP 2*, and *AP 3* are being used for the tendering and harvesting platforms in the St. George halibut fishery. The *AP 4*, *AP 5*, *Bonanza*, *Taty Z*, and *Konrad 1* are participating in the

Atka halibut fishery. The 4B halibut fishery commenced in mid June. Harvests continue to be well below past year's performances.

The F/V *Konrad I* participated in two fisheries in the third quarter. The *Konrad I* harvested nearly one hundred percent (60,000 pounds) of AJV's 4D IFQ halibut and is now fishing halibut in area 4B. The vessel continues to be skippered and crewed by APICDA CDQ residents and is providing decent earnings and experience opportunities for these individuals.

7.) Atka Pride Seafoods (APS) Activities: APS is undergoing additional modifications in 2005. Projects include electrical up-grades, outfall line installation, upgraded ice making capacity, and widening of the dock. The cost of these up-grades is included in the 2005 budget. By the end of the third quarter, the 2005 up-grades have been completed. In 2004, APS proposed to expand the existing dock. This project has been pushed back until spring of 2006. Timing and weather issues have been the main cause for the delay of this project.

Atka Pride Seafoods commenced operations in mid June. Through September 30, the local fleet had harvested a total of 269,998 pounds of area 4B CDQ halibut. Of this 269,998 pounds, APS has produced approximately 18,000 pounds of value added fletches. Through the third quarter, fourteen local residents have been employed at various capacities associated with the plant operation. In addition to employment at the plant, over ten local residents are involved in the harvesting side of the operation.

8.) Puffin Seafoods, L.L.C.: Puffin Seafoods is operating as a fish handling facility in 2005. One local community members is employed as a shoreside facilitator. AVI is involved with the fishery and has committed the use of the *AP 1*, *AP 2*, and *AP 3* as tenders/harvesting vessels. The halibut are being sold directly to the Trident plant in St. Paul, and are custom processed for Cannon Fish Company. Three local skiffs are participating in the fishery. The local fleet continues to struggle to harvest halibut. By the end of the third quarter, approximately fifty percent of the quota was harvested. On a positive note, the operation has provided employment opportunities for approximately 15 local residents. This is a much needed boost to the economically depressed situation of on St. George.

9.) Nelson Lagoon Storage Company, L.L.C.: Nelson Lagoon Storage Company experienced an above average season. With the addition of the travel lift and other associated equipment, more fishermen have expressed interest in using the facility for vessel storage.

10.) Bering Pacific Seafoods, L.L.C.: The APICDA and Bering Pacific Seafoods, L.L.C. Board of Directors approved the shoreside processor business plan prepared by the McDowell Group. Construction pends state/NMFS approval of the plan amendment initially submitted in the 1<sup>st</sup> quarter of CY 2005.

11.) Ugludax Lodge: On a discouraging note, the Lodge's charter vessel was lost at sea. In September, while transporting the filming crew and staff of Zonk! Productions (Larry Zonka's Outdoor Show) back to the lodge from a day of hunting, the party encountered adverse sea conditions. All passengers were air lifted off the vessel by the Coast Guard and safely returned to the Ugludax Lodge. Unfortunately, the sea conditions were too severe to save the vessel.

12.) Barbara J L.L.C.: The Barbara J, L.L.C. owns and operates the F/V *Barbara J*, a 109 foot vessel. The vessel participated in the open access Pacific cod fishery, harvested IFQ sablefish, and tendered salmon for Trident Seafoods. One APICDA resident was employed on the vessel in the third quarter.

13.) Akutan Quota Share Loan Program: APICDA established a loan program to assist local Akutan residents to purchase halibut quota shares in 2003. Over \$500,000 was loaned to help local Akutan residents purchase about 60,000 pounds of IFQ halibut. The APICDA board committed \$270,000 for 2005. The fishery commenced in June with approximately ninety-five percent (56,000 pounds) of the program's IFQ harvested. In addition to direct benefits to the loan recipients, this program has provided additional jobs in the community as deckhands and shore support functions.

## **B. Outreach**

APICDA management traveled to many of our communities during the third quarter to meet with residents and discuss a wide variety of CDQ and development related issues. Management and staff spent approximately 289 "person days" in the APICDA region in the third quarter. Project development, project maintenance, and community outreach are some of the activities/purposes for their trips to the APICDA communities. The bulk of this outreach was in the communities of Atka, St. George, and False Pass.

APICDA's Human Resource department is actively recruiting APICDA residents for available positions and anticipated future positions with APICDA, APICDA subsidiaries, and APICDA harvesting partners.

APICDA Community Liaison Officers (CLO) provided employment and training information to residents of their communities. This includes assisting in recruiting and recommending funding for in-region training and other training opportunities. All CLOs are required to interview scholarship applicants to verify their eligibility and employment goals after their training. The CLOs work closely with the Human Resources Director in relaying community training needs and ideas.

APICDA provides each entity within our eligible communities a copy of the Community Development Plan (CDP), and public version of the quarterly reports. Newsletters and website are vehicles used by management to increase awareness of all that APICDA and its subsidiaries have to offer for our community members.

### C. Employment

#### CDQ Local Resident Employment for Third Quarter, 2005 and Year-to-Date

	Quarter		Year-To-Date		Year-To-Date
	Positions	Wages	Positions	Wages	Discrete People
Management/Admin	6	\$104,274	17	\$312,859	6
Board Members	9	23,700	27	70,500	9
Community Liaisons	7	10,000	21	29,000	7
CDQ A/B Season	0	0	11	111,033	6
CDQ C/D Season					
Other Fishing	30	234,610	63	454,600	34
Internships	5	12,513	8	14,350	6
Other Employment	19	77,979	42	146,337	24
Totals	67	\$439,376	162	\$1,068,179	83
		Yearly		Yearly	
Quarter Discrete	22	Discrete Positions	154	Discrete People	79

Note: "Positions" are the total number of individuals who receive compensation for the quarter or year-to-date. "Discrete people" and "discrete positions" refer to the actual number of individuals or positions during the time period. Several individuals were employed in different categories during the quarter or year-to date; this means that these individuals are double (or triple) counted in the "positions" column or category, and show up in more than one of the "discrete people" categories; however, they are only counted once in the bottom line under "discrete people" or "discrete positions." Additionally, **Appendix 15** provides a complete listing by name, category, and community for all individuals employed for the third quarter. **Appendix 16** provides a complete list of Alaska Residents employed by APICDA and subsidiaries in the third quarter.

#### Summary

**Management/Administrative:** Six employees are working for APICDA in Juneau, Anchorage and Atka. These employees are or have been residents of APICDA member villages. Total wages paid this quarter \$104,274.

**Board Members:** During the second quarter, nine board members from various boards received compensation for their duties and responsibilities. Total compensation for the quarter totaled \$23,700 (this figure **IS NOT** included in the above financial statistics).

**Community Liaisons:** Seven APICDA residents received compensation for CLO duties. The total expended during the quarter was \$10,000.

**CDQ A/B Season:** No community residents participated in the "B" season pollock fishery.

Other Fishing:

Atka Pride Seafoods employed twelve CDQ residents during the second quarter. The total combined wages for these residents is \$55,026. The Atka Pride Seafoods Plant Manager is classified under Management /Admin.

One resident from Akutan was employed on the Barbara J. for total wages of \$11,620.

One St. George resident fished on the F/V *Bering Prowler* and one Akutan resident fished on the F/V *Prowler* during the third quarter. The total combined wages for these residents is \$22,851.

The AP #1 employed two St. George residents this quarter. The skipper received his OUPV license through APICDA's Supplemental Education Scholarship Program during the first quarter 2005. Total combined wages for these residents is \$63,868.

The AP #2 employed two St. George residents this quarter. Total combined wages for these residents is \$18,683.

The AP #3 employed three St. George residents and one Akutan resident this quarter. Total combined wages for these residents is \$4,454.

The AP # 5 employed two Atka residents and one Akutan resident this quarter. Total combined wages for these residents is \$12,495.

The F/V *Konrad I* employed two Unalaska residents during the third quarter for total combined wages of \$22,668.

The F/V *Bonanza* employed two Atka residents during the second quarter for a total combined wages of \$13,595.

The F/V *Taty Z* employed four Atka resident and one Unalaska resident during the second quarter for a total combined wages of \$9,349.

Other Employment:

One Nikolski resident was employed as the Lodge Manager for the Ugludax Lodge for a total of \$9,500 paid in wages.

One Nikolski resident was employed as charter boat captain for the Ugludax Lodge for a total of \$1,250 paid in wages.

Five Atka residents were employed on the Atka Hydro project in the third quarter for a total of \$24, 567 paid in wages. Two of these residents worked on the Atka Hydro Project for a total of

\$11,114.00 in wages in the second quarter. Their wages are included on the Data Form yearly totals.

One Atka resident was employed as Nazan Bay Inn's Manager during this quarter for a total of \$2,270 paid in wages.

One False Pass resident was employed as Bering Pacific's watchman during this quarter for a total of \$ \$10,210 paid in wages.

Two False Pass residents were employed in construction for a total of \$9,916 in wages.

Two Nelson Lagoon residents were employed by APICDA Joint Venture's subsidiary \$6,626.

Five Akutan residents were employed as divers and stevedores for a total of \$12,825 paid in wages.

One Akutan resident was employed by AVI for a total of \$315 in wages.

Internships: Three higher education scholarship recipients participated in the student internship program during the third quarter.

- 1 Student with Saltwater INC.
- 1 Student with Multiple Use Managers Inc.
- 1 Student with NANA Colt Engineers

Two community residents participated in the APICDA employment education program during the third quarter.

- 1 Resident with Atka Pride Seafoods
- 1 Resident with APICDA Human Resources Office

The Human Resources Director was in contact with Higher Education students to assist with their applications for the Higher Education Scholarship deadline on July 15th for the 2005-06 school year.

**D. Training & Education**

**Training and Education for Third Quarter, 2005 and Year-to-Date**

	Quarter		Year-To-Date	
	People	Expenditures	People	Expenditures
<b>Scholarships</b>				
Post Secondary	52	\$124,795	67	\$234,376
Vocational		0		0
<b>Voc-Tech Classes</b>				
Basic	2	6,000	3	8,619
Advanced	0	0	0	0
<b>Other Training</b>				
Fisheries Related	1	3,636	19	50,503
Student Loans	0	0	0	0
CDQ Staff/Board	3	2,435	10	8,758
Other	3	4,475	6	10,092
<b>Other Expenditures</b>				
To Educational Institutions				
Education Endowment				
Funds				
Community Conference	N/A	0	50	59,141
Fish Association Grants	N/A	0	N/A	80,000
School Grants	N/A	0	5	27,399
Miscellaneous Grants	N/A	\$2,857	N/A	\$8,573
<b>Total</b>	<b>83</b>	<b>\$144,198</b>	<b>128</b>	<b>\$487,461</b>

**Summary**

- 1.) Higher Education: Fifty-two Higher Education Scholarships were awarded in the third quarter for a total of \$124,795 in awards for the fall 2005 semester.
- 2.) Vocational Education: During the second quarter six residents participated in APICDA's supplemental education scholarship program, for a total of \$14,111 in awards for the third quarter.
  - One resident from Nelson Lagoon who graduated from high school this year is attending massage school.
  - Two residents of Unalaska are attending courses at the UAF Rural Campus towards their bachelor degrees.

- One False Pass resident is attending AVTEC for the Information Systems Program and one Akutan Resident is attending AVTEC for the Business and Office Technology program.
- One False Pass resident attended AMSEA's Training the Trainer course to become a certified trainer for AMSEA to offer training in region.

3.) Other Expenditures: APICDA provides various programs to the communities that receive funds from the Training & Education Program. These programs provide benefits to APICDA communities in education, experience, and good will services.

APICDA awards Fishermen Association grants in the amount of \$20,000 yearly to our seven participating fishermen's associations. These grants provide seed money to the associations for fishery-related projects, organizational expenses, and funds to participate in regulatory fishery management meetings. A total of \$80,000 has been awarded through the third quarter.

The Miscellaneous Grant program is available for projects in the community that otherwise do not fit within existing APICDA programs. An amount up to \$2,857 can be awarded to eligible community. The Executive Committee reviews each proposal before funds are awarded. Three grants were awarded in through the third quarter for a total of \$8,573.

4.) School Grants: The School Grant is available to schools in each of the eligible communities. An amount of up to of \$6,000 per year is available. Five school grants were awarded in the 1<sup>st</sup> quarter 2005 for the 2005-06 school year. The awards and projects are outlined below.

- Atka-Award \$3,400: Atka is using their grant to develop a navigation course. The class teaches middle school and high school students navigational techniques using GPS technology.
- False Pass- Award \$6,000: False Pass is planning a visit from a Marine Biologist and Marine Biology student to work with the school for one week. Students will learn about the marine life around their community, participate in fishing trips and inter-tidal zone activities, and study the species they identify on the beach. They will complete the project with a student-authored book about the fish in the local waters and host a community fish feed with the fish they catch during their project.
- Nikolski- Award \$6,000: Nikolski is continuing the school boat project partially funded last year with the APICDA School Grant. The boat will be used to give students hands on experience with GPS navigation on the water, to explore their coastal environment, and offer recreational activity to students to plan day and overnight trips to various destinations around their island.

- St. George- Award \$6,000: The St. George School is organizing a trip for nine students in grades 5-7 to Seward's Sea Life Center.
- Unalaska- Award \$6,000: Unalaska is continuing the upgrade and maintenance of the fish hatchery, to include installing a new water pump system and generator this year.

APICDA also provides education and training opportunities to employees of APICDA and its subsidiaries. In the third quarter, three staff members attended various training and educational programs. Total expenditures were \$2,435.

**Appendix 17** provides a breakdown of each individual enrolled/attending APICDA funded education and training programs.

### **III. Administration**

#### **A. Board Activities**

1.) Changes in Board: There were no changes to APICDA board members during the third quarter.

2.) Decisions/Actions: The Board of Directors for APICDA met in September. There were no other decisions or actions of major consequence that are not included here or in the confidential section of this report.

3.) Schedule for Next Quarter: The next APICDA board meeting is scheduled for December 2005, although committees and subsidiaries will meet throughout the quarter.

4.) Minutes: Approved minutes from board meetings in the third quarter are attached as **Appendix 14** in the confidential section of this report.

#### **B. State Of Alaska Reporting Compliance**

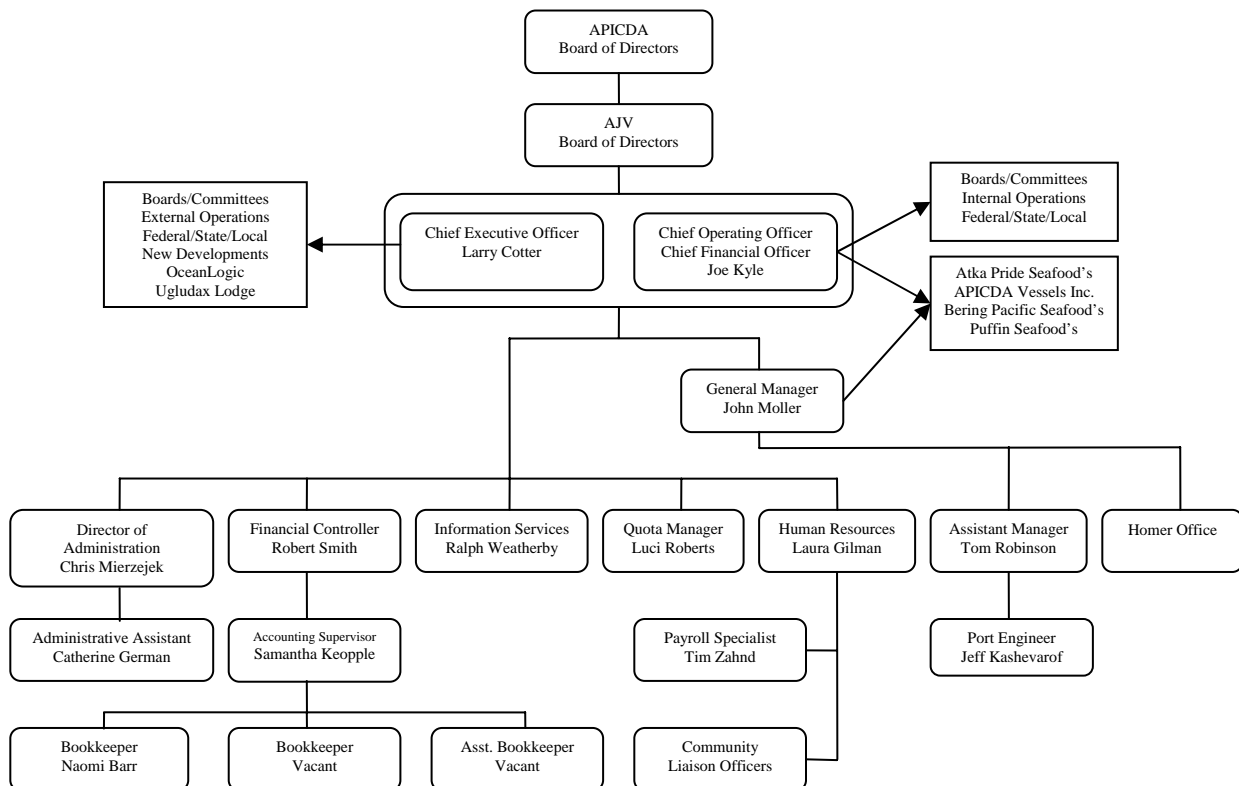
APICDA and its subsidiaries are and were in full compliance with all State of Alaska CDQ reporting regulations.

**C. CDP Amendment Status**

Shown below are the plan amendments approved through the third quarter.

2005 Technical / Substantial Amendments				
Numbers	Technical or Substantial	Description	Date Submitted	Date Approved
SA#05-01	Substantial	Transfer AI Pollock to BBEDC	2/16/2005	2/16/2005
SA#05-02	Substantial	Transfer A season Pacific cod to NSEDC	2/18/2005	2/18/2005
TA#05-03	Technical	Transfer Opilio crab from NSEDC	2/22/2005	Not Approved
TA#05-04	Technical	Removal of eligible vessels	3/2/2005	3/3/2005
SA#05-05	Substantial	Budget Amendments	4/6/2005	6/2/2005
SA#05-06	Substantial	False Pass Processing Facility	4/6/2005	Pending
SA#05-07	Substantial	APS plant up-grades	4/8/2005	6/10/2005
SA#05-08	Substantial	Barbara J purchase	4/20/2005	5/20/2005
TA#05-09	Technical	Sablefish CDQ agreement-Sea Venture	5/20/2005	5/23/2005
SA# 0510	Technical	APICDA Strategic Investment Plan	7/13/2005	7/29/2005
SA#05-11	Substantial	Akutan IFQ Loan Program	7/20/2005	8/1/2005

**D. Corporate Organizational Structure**



#### IV. Harvesting Report

##### A. Target Fishery Harvest Activity

1.) Pollock CDQ Harvest: The pollock “B” season CDQ fishery was completed in the third quarter. The *C/P Starbound*, *C/P Island Enterprise*, and *C/P Kodiak Enterprise*, harvested APICDA’s “B” season pollock. Bycatch was kept at a minimum.

CDQ Reserve Category	Units	Allocation after transfers	1st Qtr	2nd Qtr	3rd Qtr	4th Qtr	YTD Harvest	% of Target Harvest
A Season (40%)	mt	8,386.000	8,233.379				8,233.379	39.296%
B Season (60%)	mt	12,579.000		351.827	12,366.864		12,718.691	60.704%
BS Pollock Total	mt	20,965.000	8,233.379	351.827	12,366.864	0.000	20,952.070	100.000%
<b>Bycatch</b>								
Pacific Cod	mt	2,318.000	42.483	0.152	35.423		78.058	0.373%
BS FG Sablefish	mt	36.600					0.000	0.000%
AI FG Sablefish	mt	103.270					0.000	0.000%
BS Sablefish	mt	18.320					0.000	0.000%
AI Sablefish	mt	16.490					0.000	0.000%
WAI Atka Mackerel 543	mt	450.000					0.000	0.000%
CAI Atka Mackerel 542	mt	798.900					0.000	0.000%
EAI/BS Atka Mackerel 541	mt	169.000	0.033		0.020		0.053	0.000%
Yellowfin Sole	mt	1,904.280	0.964		0.002		0.966	0.005%
Rock Sole	mt	747.120	47.235	0.004	0.191		47.430	0.226%
BS Greenland Turbot	mt	32.480	0.028		1.052		1.080	0.005%
AI Greenland Turbot	mt	11.950					0.000	0.000%
Arrowtooth Flounder	mt	202.000	3.172	0.010	5.203		8.385	0.040%
Flathead Sole	mt	292.600	48.041	0.049	5.715		53.805	0.257%
Other Flatfish	mt	58.380	0.343		0.020		0.363	0.002%
Alaska Plaice	mt	109.000	0.014		0.052		0.066	0.000%
BS POP	mt	17.850					0.000	0.000%
WAI POP 543	mt	114.300					0.000	0.000%
CAI POP 542	mt	68.400					0.000	0.000%
EAI POP 541	mt	69.300					0.000	0.000%
BSAI Northern Rockfish	mt	0.000	0.006				0.006	0.000%
BSAI Shortraker Rockfish	mt	0.000			0.010		0.010	0.000%
BSAI Rougheye Rockfish	mt	0.000					0.000	0.000%
BS Other Rockfish	mt	7.350	0.019		0.004		0.023	0.000%
AI Other Rockfish	mt	9.440					0.000	0.000%
Other Species	mt	0.000	3.917	0.022	10.763		14.702	0.070%
<b>PSQ Reserve Category</b>								
Zone 1 Red King Crab	ea	3,546	0	0	0		0	
Zone 1 Bairdi Tanner Crab	ea	19,110	0	0	0		0	
Zone 2 Bairdi Tanner Crab	ea	53,460	7	0	3		10	
Opilio Tanner Crab	ea	81,563	0	0	21		21	
Pacific Halibut (mortality)	mt	75.240	2.743	0.115	0.334		3.192	0.015%
Chinook Salmon	ea	305	91	0	185		276	
Non-Chinook Salmon	ea	441	0	0	0		0	

2005 Third Quarter, APICDA Report

October 31, 2005

Page 13

2.) Pacific Cod CDQ Harvest: The Prowler vessels in combination, harvested approximately 1,130 metric tons of Pacific cod through the third quarter.

CDQ Reserve Category	Units	Allocation after transfers	1st Qtr	2nd Qtr	3rd Qtr	4th Qtr	YTD Harvest	% of Target Harvest
A Season (60%)	mt	1,390.800					0.000	0.000%
B Season (40%)	mt	927.200		279.387	851.558		1,130.945	100.000%
Pacific Cod Total	mt	2,318.000	0.000	279.387	851.558	0.000	1,130.945	100.000%
<b>Bycatch</b>								
Non Pollock Quota	mt	N/A		0.768	25.628		26.396	2.334%
BS FG Sablefish	mt	36.600					0.000	0.000%
AI FG Sablefish	mt	103.270					0.000	0.000%
BS Sablefish	mt	18.320					0.000	0.000%
AI Sablefish	mt	16.490					0.000	0.000%
WAI Atka Mackerel 543	mt	450.000					0.000	0.000%
CAI Atka Mackerel 542	mt	798.900					0.000	0.000%
EAI/BS Atka Mackerel 541	mt	169.000					0.000	0.000%
Yellowfin Sole	mt	1,904.280			0.212		0.212	0.019%
Rock Sole	mt	747.120		0.102	0.361		0.463	0.041%
BS Greenland Turbot	mt	32.480		0.085	3.874		3.959	0.350%
AI Greenland Turbot	mt	11.950					0.000	0.000%
Arrowtooth Flounder	mt	202.000		3.668	23.104		26.772	2.367%
Flathead Sole	mt	292.600		2.569	9.630		12.199	1.079%
Other Flatfish	mt	58.380					0.000	0.000%
Alaska Plaice	mt	109.000					0.000	0.000%
BS Pacific Ocean Perch	mt	17.850					0.000	0.000%
WAI Pacific Ocean Perch 543	mt	114.300					0.000	0.000%
CAI Pacific Ocean Perch 542	mt	68.400					0.000	0.000%
EAI Pacific Ocean Perch 541	mt	69.300					0.000	0.000%
BSAI Northern Rockfish	mt	0.000					0.000	0.000%
BSAI Shortraker Rockfish	mt	0.000					0.000	0.000%
BSAI Rougheye Rockfish	mt	0.000					0.000	0.000%
BS Other Rockfish	mt	7.350					0.000	0.000%
AI Other Rockfish	mt	9.440					0.000	0.000%
Other Species	mt	0.000		51.383	129.453		180.836	15.990%
<b>PSQ Reserve Category</b>								
Zone 1 Red King Crab	ea	3,546					0	
Zone 1 Bairdi Tanner Crab	ea	19,110					0	
Zone 2 Bairdi Tanner Crab	ea	53,460		0	0		0	
Opilio Tanner Crab	ea	81,563					0	
Pacific Halibut (mortality)	mt	75.240		1.885	4.484		6.369	0.563%
Chinook Salmon	ea	305					0	
Non-Chinook Salmon	ea	441					0	

2005 Third Quarter, APICDA Report

October 31, 2005

Page 14

3.) Atka Mackerel CDQ Harvest: The F/T *Seafisher* harvested nearly forth-five percent of APICDA's Atka mackerel allocations in the third quarter. The vessel will continue harvests of Atka mackerel and POP in the fourth quarter.

CDQ Reserve Category	Units	Allocation after transfers	1st Qtr	2nd Qtr	3rd Qtr	4th Qtr	YTD Harvest	% of Target Harvest
WAI Atka Mackerel 543	mt	450.000			0.000		0.000	0.000%
CAI Atka Mackerel 542	mt	798.900			515.112		515.112	81.687%
EAI/BS Atka Mackerel 541	mt	169.000			115.483		115.483	18.313%
Atka Mackerel Total	mt	1,417.900	0.000	0.000	630.595	0.000	630.595	100.000%
<b>Bycatch</b>								
Non Pollock Quota	mt	N/A					0.000	0.000%
Pacific Cod	mt	2,318.000			21.138		21.138	3.352%
BS FG Sablefish	mt	36.600					0.000	0.000%
AI FG Sablefish	mt	103.270					0.000	0.000%
BS Sablefish	mt	18.320					0.000	0.000%
AI Sablefish	mt	16.490					0.000	0.000%
Yellowfin Sole	mt	1,904.280					0.000	0.000%
Rock Sole	mt	747.120			8.975		8.975	1.423%
BS Greenland Turbot	mt	32.480					0.000	0.000%
AI Greenland Turbot	mt	11.950			3.159		3.159	0.501%
Arrowtooth Flounder	mt	202.000			2.072		2.072	0.329%
Flathead Sole	mt	292.600					0.000	0.000%
Other Flatfish	mt	58.380					0.000	0.000%
Alaska Plaice	mt	109.000					0.000	0.000%
BS Pacific Ocean Perch	mt	17.850					0.000	0.000%
WAI Pacific Ocean Perch 543	mt	114.300			0.000		0.000	0.000%
CAI Pacific Ocean Perch 542	mt	68.400			18.970		18.970	3.008%
EAI Pacific Ocean Perch 541	mt	69.300			1.812		1.812	0.287%
BSAI Northern Rockfish	mt	0.000			22.070		22.070	3.500%
BSAI Shortraker Rockfish	mt	0.000					0.000	0.000%
BSAI Rougheye Rockfish	mt	0.000					0.000	0.000%
BS Other Rockfish	mt	7.350					0.000	0.000%
AI Other Rockfish	mt	9.440			0.154		0.154	0.024%
Other Species	mt	0.000			2.110		2.110	0.335%
<b>PSQ Reserve Category</b>								
Zone 1 Red King Crab	ea	3,546					0.000	
Zone 1 Bairdi Tanner Crab	ea	19,110					0.000	
Zone 2 Bairdi Tanner Crab	ea	53,460					0.000	
Opilio Tanner Crab	ea	81,563					0.000	
Pacific Halibut (mortality)	mt	75.240			0.901		0.901	0.143%
Chinook Salmon	ea	305					0.000	
Non-Chinook Salmon	ea	441					0.000	

2005 Third Quarter, APICDA Report

October 31, 2005

Page 15

4.) Yellowfin Sole CDQ Harvest: The F/T *Seafisher* harvested 58 metric tons of APICDA's yellowfin sole in the third quarter. The *Seafisher* will continue harvesting yellowfin sole in the fourth quarter.

CDQ Reserve Category	Units	Allocation after transfers	1st Qtr	2nd Qtr	3rd Qtr	4th Qtr	YTD Harvest	% of Target Harvest
Yellowfin Sole	mt	1,904.280			57.629		57.629	100.000%
<b>Bycatch</b>								
Non Pollock Quota	mt	N/A			21.932		21.932	38.057%
Pacific Cod	mt	2,318.000			6.629		6.629	11.503%
BS FG Sablefish	mt	36.600					0.000	0.000%
AI FG Sablefish	mt	103.270					0.000	0.000%
BS Sablefish	mt	18.320					0.000	0.000%
AI Sablefish	mt	16.490					0.000	0.000%
WAI Atka Mackerel 543	mt	450.000					0.000	0.000%
CAI Atka Mackerel 542	mt	798.900					0.000	0.000%
EAI/BS Atka Mackerel 541	mt	169.000					0.000	0.000%
Rock Sole	mt	747.120			9.176		9.176	15.923%
BS Greenland Turbot	mt	32.480					0.000	0.000%
AI Greenland Turbot	mt	11.950					0.000	0.000%
Arrowtooth Flounder	mt	202.000			5.558		5.558	9.644%
Flathead Sole	mt	292.600			15.388		15.388	26.702%
Other Flatfish	mt	58.380					0.000	0.000%
Alaska Plaice	mt	109.000			9.201		9.201	15.966%
BS Pacific Ocean Perch	mt	17.850					0.000	0.000%
WAI Pacific Ocean Perch 543	mt	114.300					0.000	0.000%
CAI Pacific Ocean Perch 542	mt	68.400					0.000	0.000%
EAI Pacific Ocean Perch 541	mt	69.300					0.000	0.000%
BSAI Northern Rockfish	mt	0.000					0.000	0.000%
BSAI Shortraker Rockfish	mt	0.000					0.000	0.000%
BSAI Rougheye Rockfish	mt	0.000					0.000	0.000%
BS Other Rockfish	mt	7.350					0.000	0.000%
AI Other Rockfish	mt	9.440					0.000	0.000%
Other Species	mt	0.000			8.290		8.290	14.385%
<b>PSQ Reserve Category</b>								
Zone 1 Red King Crab	ea	3,546			76		76	
Zone 1 Bairdi Tanner Crab	ea	19,110			139		139	
Zone 2 Bairdi Tanner Crab	ea	53,460					0	
Opilio Tanner Crab	ea	81,563					0	
Pacific Halibut (mortality)	mt	75.240			1.009		1.009	1.751%
Chinook Salmon	ea	305					0	
Non-Chinook Salmon	ea	441					0	

**CDQ Crab Harvest**

5.) Opilio CDQ Harvests: A total of 151,087 pounds of opilio CDQ was harvested during the first quarter. No activity in the third quarter.

Vessels participating in the 2005 opilio harvest were the *Farwest Leader*, and *Billikin*.

6.) Bairdi CDQ Harvests: No activity in the third quarter

7.) Bristol Bay Red King Crab: No activity in the third quarter

CDQ Reserve Category	Units	Annual Allocation	Trans. In	Trans. Out	Allocation after transfers	1st Qtr	2nd Qtr	3rd Qtr	4th Qtr	YTD Harvest	Percent Harvested	Remaining Allocation
Bering Sea C. <i>Opilio</i>	lbs	148,507			148,507	151,087				151,087	101.74%	-2,580
Bering Sea C. <i>Bairdi</i>	lbs	16,200			0					0	0.00%	0
Bristol Bay Red King crab	lbs	311,593			0					0	0.00%	0
Norton Sound Red King crab	lbs	0			0					0	0.00%	0
Pribilof Red & Blue King crab	lbs	0			0					0	0.00%	0
St Matthew Blue King crab	lbs	0			0					0	0.00%	0

6.) Halibut Harvesting: Atka Pride Seafoods commenced operations in late June. Through September 30, the local fleet had harvested a total of 285,401 pounds of area 4B CDQ and 9,800 pounds of IFQ halibut. All of the halibut was processed through Atka Pride Seafoods.

St. George fishermen, fishing for Puffin Seafoods, started fishing in late June. The fish are being tendered to St. Paul, where Trident Seafoods is custom processing for Cannon Fish Company. Through September 30, the local fleet had harvested a total of 61,934 pounds of halibut. Approximately 15 local residents are involved in the fishery. Due to the NMFS regulations allowing 4C halibut to be harvested in 4D, harvests have improved.

CDQ Category	Units	Annual Allocation	Trans. In	Trans. Out	Allocation after trans.	1 <sup>st</sup> Qtr	2 <sup>rd</sup> Qtr	3 <sup>rd</sup> Qtr	4 <sup>th</sup> Qtr	YTD Harvest	Percent Harvested	Remaining Allocation
4B Halibut	lbs	452,000			452,000		15,403	269,998		285,401	63.1%	166,599
4C Halibut	lbs	136,125			136,125		6,851	61,934		68,785	50.5%	67,340
4D Halibut	lbs	0			0					0	0.00%	0
4E Halibut	lbs	0			0					0	0.00%	0
<b>Total</b>					<b>588,125</b>					<b>354,186</b>		<b>233,939</b>

## 2005 Third Quarter, APICDA Report

October 31, 2005

Page 17

7.) Bering Sea Sablefish Harvesting: The *Konrad 1* harvested one hundred percent of APICDA's BS sablefish allocation in the second quarter. The vessel harvested with pots.

CDQ Reserve Category	Units	Allocation after transfers	1st Qtr	2nd Qtr	3rd Qtr	4th Qtr	YTD Harvest	% of Target Harvest
BS FG Sablefish	mt	36.600		36.600			36.600	100.000%
<b>Bycatch</b>								
Non Pollock Quota	mt	N/A					0.000	0.000%
Pacific Cod	mt	2,317.500					0.000	0.000%
AI FG Sablefish	mt	55.020					0.000	0.000%
BS Sablefish	mt	19.320		3.779			3.779	10.325%
AI Sablefish	mt	12.740					0.000	0.000%
WAI Atka Mackerel 543	mt	450.000					0.000	0.000%
CAI Atka Mackerel 542	mt	798.900					0.000	0.000%
EAI/BS Atka Mackerel 541	mt	168.900					0.000	0.000%
Yellowfin Sole	mt	1,904.280					0.000	0.000%
Rock Sole	mt	747.120					0.000	0.000%
BS Greenland Turbot	mt	32.480		0.619			0.619	1.691%
AI Greenland Turbot	mt	10.200					0.000	0.000%
Arrowtooth Flounder	mt	198.000		0.735			0.735	2.008%
Flathead Sole	mt	292.600					0.000	0.000%
Other Flatfish	mt	58.380					0.000	0.000%
Alaska Plaice	mt	94.000					0.000	0.000%
BS Pacific Ocean Perch	mt	17.850					0.000	0.000%
WAI Pacific Ocean Perch 543	mt	114.300					0.000	0.000%
CAI Pacific Ocean Perch 542	mt	68.400					0.000	0.000%
EAI Pacific Ocean Perch 541	mt	69.300					0.000	0.000%
BSAI Northern Rockfish	mt	0.000					0.000	0.000%
BSAI Shortraker Rockfish	mt	0.000		0.002			0.002	0.005%
BSAI Rougheye Rockfish	mt	0.000					0.000	0.000%
BS Other Rockfish	mt	7.350		0.003			0.003	0.008%
AI Other Rockfish	mt	9.240					0.000	0.000%
Other Species	mt	0.000					0.000	0.000%
<b>PSQ Reserve Category</b>								
Zone 1 Red King Crab	ea	3,546					0	
Zone 1 Bairdi Tanner Crab	ea	19,110					0	
Zone 2 Bairdi Tanner Crab	ea	53,460					0	
Opilio Tanner Crab	ea	81,563					0	
Pacific Halibut (mortality)	mt	75.240					0.000	0.000%
Chinook Salmon	ea	305					0	
Non-Chinook Salmon	ea	441					0	

## 2005 Third Quarter, APICDA Report

October 31, 2005

Page 18

8.) Aleutian Island Sablefish: The F/V *Aleutian Spray* harvested approximately ninety-four percent of APICDA's AI fixed gear sablefish allocation in the third quarter. This amount is inclusive of the approximate 50 metric tons transferred in from YDFDA. The *Aleutian Spray* anticipates harvesting the remaining allocation in the fourth quarter. The vessel harvested with pots.

CDQ Reserve Category	Units	Allocation after transfers	1st Qtr	2nd Qtr	3rd Qtr	4th Qtr	YTD Harvest	% of Target Harvest
AI FG Sablefish	mt	103.270			95.798		95.798	100.000%
<b>Bycatch</b>								
Non Pollock Quota	mt	N/A					0.000	0.000%
Pacific Cod	mt	2,318.000					0.000	0.000%
BS FG Sablefish	mt	36.600					0.000	0.000%
BS Sablefish	mt	18.320					0.000	0.000%
AI Sablefish	mt	16.490					0.000	0.000%
WAI Atka Mackerel 543	mt	450.000					0.000	0.000%
CAI Atka Mackerel 542	mt	798.900					0.000	0.000%
EAI/BS Atka Mackerel 541	mt	169.000					0.000	0.000%
Yellowfin Sole	mt	1,904.280					0.000	0.000%
Rock Sole	mt	747.120					0.000	0.000%
BS Greenland Turbot	mt	32.480					0.000	0.000%
AI Greenland Turbot	mt	11.950			1.038		1.038	1.084%
Arrowtooth Flounder	mt	202.000			2.423		2.423	2.529%
Flathead Sole	mt	292.600					0.000	0.000%
Other Flatfish	mt	58.380					0.000	0.000%
Alaska Plaice	mt	109.000					0.000	0.000%
BS Pacific Ocean Perch	mt	17.850					0.000	0.000%
WAI Pacific Ocean Perch 543	mt	114.300					0.000	0.000%
CAI Pacific Ocean Perch 542	mt	68.400					0.000	0.000%
EAI Pacific Ocean Perch 541	mt	69.300					0.000	0.000%
BSAI Northern Rockfish	mt	0.000					0.000	0.000%
BSAI Shortraker Rockfish	mt	0.000			0.196		0.196	0.205%
BSAI Rougheye Rockfish	mt	0.000			0.116		0.116	0.121%
BS Other Rockfish	mt	7.350					0.000	0.000%
AI Other Rockfish	mt	9.440			0.261		0.261	0.272%
Other Species	mt	0.000			0.006		0.006	0.006%
<b>PSQ Reserve Category</b>								
Zone 1 Red King Crab	ea	3,546					0	
Zone 1 Bairdi Tanner Crab	ea	19,110					0	
Zone 2 Bairdi Tanner Crab	ea	53,460					0	
Opilio Tanner Crab	ea	81,563					0	
Pacific Halibut (mortality)	mt	75.240			0.000		0.000	0.000%
Chinook Salmon	ea	305					0	
Non-Chinook Salmon	ea	441					0	

**PSC Harvests**

9.) Pollock Harvested by Non-Pollock Vessels: In the third quarter, the F/T *Seafisher* harvested approximately 22 metric tons of pollock while executing APICDA's yellowfin sole CDQ fishery. In the third quarter, the F/LL Bering Prowler/Ocean Prowler/Prowler combined harvested approximately 26 metric tons of pollock while harvesting CDQ Pacific cod.

	Harvest(mt)	Retained (mt)	Discarded (mt)	% Retained
Fixed Gear	26.396	23.323	3.073	88%
Trawl Catcher Processor	21.932	21.400	0.532	98%
<b>Total</b>	<b>48.328</b>	<b>44.723</b>	<b>3.605</b>	<b>93%</b>

10.) PSC Not Accrued Against PSQ Allocations: A small number of opilio and Tanner crabs were taken in the Pacific cod CDQ fixed gear fishery in the third quarter.

	Chinook	Non-Chinook	King Crab	Tanner	Opilio
Fixed Gear	0	0	0	35	35
Trawl Catcher Processor	0	0	0	10	10
Trawl Catcher Vessel	0	0	0	0	0
<b>Total</b>	<b>0</b>	<b>0</b>	<b>0</b>	<b>45</b>	<b>45</b>



**B. Pollock & MSCDQ Harvested by Quarter and Y-T-D**

CDQ Group: APICDA CDQ Reserve Category	Units	Initial	Transferred	Transferred	Allocation	CDQ / PSQ Catch Reported				YTD	Percent	CDQ / PSQ	Percent
		Allocation	In	Out	after transfers	1st Qtr	2nd Qtr	3rd Qtr	4th Qtr	Harvest	Harvested	Remaining	Remaining
BS Pollock	mt	20,699.000	266.000	0.000	20,965.000	8,233.379	351.827	12,366.864	0.000	20,952.070	99.9%	12.930	0.1%
AI Pollock	mt	266.000	0.000	266.000	0.000	0.000	0.000	0.000	0.000	0.000	0.0%	0.000	0.0%
Pacific Cod	mt	2,317.500	840.500	840.000	2,318.000	42.483	279.539	914.748	0.000	1,236.770	53.4%	1,081.230	46.6%
BS FG Sablefish	mt	36.600	0.000	0.000	36.600	0.000	36.600	0.000	0.000	36.600	100.0%	0.000	0%
AI FG Sablefish	mt	55.020	48.250	0.000	103.270	0.000	0.000	95.798	0.000	95.798	92.8%	7.472	7.2%
BS Sablefish	mt	19.320	0.000	1.000	18.320	0.000	3.779	0.000	0.000	3.779	20.6%	14.541	79%
AI Sablefish	mt	12.740	3.750	0.000	16.490	0.000	0.000	0.000	0.000	0.000	0.0%	16.490	100%
WAI Atka Mackerel 543	mt	450.000	0.000	0.000	450.000	0.000	0.000	0.000	0.000	0.000	0.0%	450.000	100%
CAI Atka Mackerel 542	mt	798.900	0.000	0.000	798.900	0.000	0.000	515.112	0.000	515.112	64.5%	283.788	35.5%
EAI/BS Atka Mackerel 541	mt	168.900	0.100	0.000	169.000	0.033	0.000	115.503	0.000	115.536	68.4%	53.464	31.6%
Yellowfin Sole	mt	1,904.280	0.000	0.000	1,904.280	0.964	0.000	57.843	0.000	58.807	3.1%	1,845.473	96.9%
Rock Sole	mt	747.120	0.000	0.000	747.120	47.235	0.106	18.703	0.000	66.044	8.8%	681.076	91.2%
BS Greenland Turbot	mt	32.480	0.000	0.000	32.480	0.028	0.704	4.926	0.000	5.658	17.4%	26.822	82.6%
AI Greenland Turbot	mt	10.200	1.750	0.000	11.950	0.000	0.000	4.197	0.000	4.197	35.1%	7.753	64.9%
Arrowtooth Flounder	mt	198.000	4.000	0.000	202.000	3.172	4.413	38.360	0.000	45.945	22.7%	156.055	77.3%
Flathead Sole	mt	292.600	0.000	0.000	292.600	48.041	2.618	30.733	0.000	81.392	27.8%	211.208	72.2%
Other Flatfish	mt	68.380	0.000	10.000	58.380	0.343	0.000	0.020	0.000	0.363	0.6%	58.017	99.4%
Alaska Plaice	mt	84.000	25.000	0.000	109.000	0.014	0.000	9.253	0.000	9.267	8.5%	99.733	91.5%
BS Pacific Ocean Perch	mt	17.850	0.000	0.000	17.850	0.000	0.000	0.000	0.000	0.000	0.0%	17.850	100.0%
WAI Pacific Ocean Perch 543	mt	114.300	0.000	0.000	114.300	0.000	0.000	0.000	0.000	0.000	0.0%	114.300	100%
CAI Pacific Ocean Perch 542	mt	68.400	0.000	0.000	68.400	0.000	0.000	18.970	0.000	18.970	27.7%	49.430	72.3%
EAI Pacific Ocean Perch 541	mt	69.300	0.000	0.000	69.300	0.000	0.000	1.812	0.000	1.812	2.6%	67.488	97.4%
BSAI Northern Rockfish	mt	0.000	0.000	0.000	0.000	0.006	0.000	22.070	0.000	22.076	N/A	N/A	N/A
BSAI Shortraker Rockfish	mt	0.000	0.000	0.000	0.000	0.000	0.002	0.206	0.000	0.208	N/A	N/A	N/A
BSAI Rougheye Rockfish	mt	0.000	0.000	0.000	0.000	0.000	0.000	0.116	0.000	0.116	N/A	N/A	N/A
BS Other Rockfish	mt	7.350	0.000	0.000	7.350	0.019	0.003	0.004	0.000	0.026	0.4%	7.324	99.6%
AI Other Rockfish	mt	9.240	0.200	0.000	9.440	0.000	0.000	0.415	0.000	0.415	4.4%	9.025	95.6%
Other Species	mt	0.000	0.000	0.000	0.000	3.917	51.405	150.622	0.000	205.944	N/A	N/A	N/A
<b>PSQ Reserve Category</b>													
Zone 1 Red King Crab	ea	3,546	0	0	3,546	0	0	76	0	76	2.15%	3,470	98%
Zone 1 Bairdi Tanner Crab	ea	19,110	0	0	19,110	0	0	139	0	139	0.73%	18,971	99%
Zone 2 Bairdi Tanner Crab	ea	53,460	0	0	53,460	7	0	3	0	10	0.02%	53,450	100.0%
Opilio Tanner Crab	ea	81,563	0	0	81,563	0	0	21	0	21	0.03%	81,542	100.0%
Pacific Halibut (mortality)	mt	75.240	0.000	0.000	75.240	2.743	2.000	6.728	0.000	11.471	15.25%	63.769	84.8%
Chinook Salmon	ea	305	0	0	305	91	0	185	0	276	90.42%	29	9.6%
Non-Chinook Salmon	ea	441	0	0	441	0	0	0	0	0	0.00%	441	100.0%

**C. Compliance**

APICDA and its harvesting partners were in full compliance.

**D. Other Fishing Issues/Activities**

There were no other fishing issues or activities.

**E. APICDA's 2003-05 Measurable Milestones**

**Table 1  
Akutan Milestones**

Project	Completion Date	Status
Monitor progress toward construction of large boat harbor in 2006.	2006	\$850,000 commitment by APICDA.
Form Sport fish joint venture.	2003	Pending.
<b>Quota Share Purchase Program:</b>		
Ascertain interest in the community and identify potential participants.	2003-05	Ongoing
Provide funding for loans.	2003-05	Ongoing
Locate quota shares, negotiate price and purchase.	2003-05	Ongoing
Monitor use of the IFQ and repayment schedule.	2003-05	Ongoing

**Table 2**  
**Atka Milestones**

Project	Completion Date	Status
Continue water taxi and pilot boat activities.	Ongoing	Ongoing.
Process sablefish & halibut CDQ.	Ongoing	Ongoing.
Expand processing at APS, both by species and time of year.	Ongoing	Ongoing
Pursue development of a small boat harbor in Atka.	Ongoing	Ongoing.
Provide limited vessel repair opportunity.	Ongoing	Proposed.
Evaluate providing fuel depot services.	Ongoing	Proposed.
Evaluate warehouse storage opportunity.	Ongoing	Proposed.
Bring sport fish clients to Atka.	2003	Proposed.
Negotiate a <i>quid pro quo</i> agreement in 2003 with the Atxam Corporation. If successful, distribute a grant for partial federal matching funds up to \$125,000 towards the hydro project.	2003	Completed
If 2003 <i>quid pro quo</i> agreement is in place, distribute the remaining grant funds up to \$250,000 as requested by the City of Atka in 2004-05	2004-05	Completed
Monitor progress towards construction of a hydroelectric facility.	2003-05	Ongoing
Expand and up-grade the Atka Pride Seafoods Processing Plant	2004	Completed
Extend the existing dock by 600 square feet.	2004	Ongoing
Extend existing outfall line by 225 feet	2005	Complete

Add ancillary ice machine to the APS operation	2005	Complete
--	------	----------

**Table 3**  
**False Pass Milestones**

Project	Completion Date	Status
Employ fifteen or more local residents in connection with Dipper operations.	Ongoing.	Terminated
Purchase and process 3 million pounds of Pacific cod, with focus on local fishermen.	Ongoing.	Terminated
Maximize financial return.	Ongoing.	Ongoing.
Complete plan to transition to shoreplant.	2004	Complete
Construct shore plant and expand operations.	2007	Pending.
Complete joint venture discussions for store.	2003	Terminated
Pursue development of a small boat harbor in False Pass.	2005	Ongoing.

**Table 4**  
**Nelson Lagoon Milestones**

Project	Completion Date	Status
Complete feasibility study, business plan and design for processing plant.	2004	Suspended
Construct plant.	2005	Suspended

**Table 5**  
**Nikolski Milestones**

Project	Completion Date	Status
Employ six or more local residents in lodge business.	Ongoing	In progress.
Maximize financial return from Ugludax Lodge.	Ongoing	In progress.
To provide up to \$150,000 for the purchase of various navigational aides and installation costs associated with the project.	2003	Completed
Monitor progress of installation of navigational aides in Nikolski in 2003-04	2003-04	Completed

**Table 6**  
**St. George Milestones**

Project	Completion Date	Status
Complete engineering and permitting; construct shore plant.	2003	Pending.
Open facility and process crab, Pacific cod and halibut.	2004	Pending.
Provide 40 or more local jobs in connection with construction of the plant, harvesting, processing, and ancillary activities.	2004/05	Pending.
Maximize financial return from processing company.	2004/05	Pending.
Harvest 4C halibut CDQ and IFQ.	2003/2005	Ongoing.
Maintain gear and vessel upgrade program	2003/2005	Ongoing.
Identify Tract I tenants and generate revenue from facilities.	2003/2005	Ongoing.
Expand number of sport fish visitors to St. George.	2003/2005	Pending.
Provide employment for six or more local residents in conjunction with sport fishing business.	2003/2005	Pending.
Maintain Puffin Seafoods as a viable business.	2003/2005	Ongoing.

**Table 7**  
**Other APICDA Milestones**

Project	Completion Date	Status
Purchase large commercial fishing vessels.	Ongoing	Ongoing.
Continue Quota Share Loan Guarantee Program.	Ongoing	Ongoing.
Purchase Quota Shares.	Ongoing	Ongoing.
Provide annual donation to local fishermen's associations.	Spring (each year)	Ongoing.
Hold annual APICDA Village Outreach Conference.	Spring (annual)	Ongoing.
Assessment of Product Diversification Program expansion opportunities.	Ongoing	Ongoing
Develop flatfish operation.	Ongoing	In process.
Distribute annual school grants.	Winter (annual)	Ongoing.
Establish higher education scholarship funding levels and identify recipients.	Spring (annual)	Ongoing.
Implement revised Small Vessel Acquisition Program.	2003	Suspended
Evaluate all joint venture and subsidiary investments from a goal, objective, and ROI making perspective.	Ongoing	Ongoing.
Maximize harvest of all APICDA MSCDQ allocations.	Ongoing	Ongoing.
Maximize the harvest of target species and minimize the harvest of incidental species, particularly prohibited species.	Ongoing	Ongoing.

Maximize the use of gear types that have minimized adverse impacts upon habitat.	Ongoing	Ongoing.
Monitor MSCDQ vessel harvesting activities on an individual vessel basis to manage target and non-target harvests.	Ongoing	Ongoing.
Monitor MSCDQ vessel activities to ensure compliance with all federal and state regulations.	Ongoing	Ongoing.
Comply with all state and federal reporting requirements on a timely basis.	Ongoing	Ongoing.
Achieve a royalty return from MSCDQ harvesting and processing operations that are fair to all parties involved.	Ongoing	Ongoing.
Maximize the return from MSCDQ harvesting and processing operations by participating as a whole or part-owner at as many levels of the industry (harvesting, processing, marketing, etc.) as possible and practical.	Ongoing	Ongoing.
Maximize the employment of local residents in all phases of MSCDQ harvesting, processing, and marketing.	Ongoing	Ongoing.
Contribute ten percent of annual APICDA revenue into the Long-term Reserve Account (LRA) until \$10 million.	Ongoing	Ongoing.
Invest LRA funds in accordance with APICDA's Investment Guidelines.	Ongoing	Ongoing.
Manage non-LRA funds to maximize liquidity while emphasizing security.	Ongoing	Ongoing.
Normally generate one-half to one percent above prime as a rate of return for internal loans.	Ongoing	Ongoing.

Establish annual board and administrative budgets, and monitor budgets on a continuing basis.	Ongoing	Ongoing.
Maintain a cash flow projection six months into the future.	Ongoing	Ongoing.
Establish annual board and administrative budgets, and monitor budgets on a continuing basis.	Ongoing	Ongoing.
File quarterly and annual reports on a timely basis.	Ongoing	Ongoing.
Comply with all CDQ federal and state rules and regulations.	Ongoing	Ongoing.
Complete an annual audit.	Ongoing	Ongoing.
Have regular board and sub-committee meetings.	Ongoing	Ongoing.
Review by-laws on an annual basis.	Ongoing	Ongoing.
Ensure that fishermen associations conduct their APICDA board representative elections in accordance with appropriate by-laws.	Ongoing	Ongoing.
Ensure that staff implements board policies as enunciated.	Ongoing	Ongoing.
Maintain Quota Share Retention Program.	Ongoing	Ongoing.
Maintain College Intern Program.	Ongoing	Ongoing.
Implement a comprehensive set of board administrative policies developed and adopted by the APICDA and AJV Board of Directors.	Winter 2003	Ongoing
Implement an investment criteria matrix developed and adopted by the APICDA and AJV Board of Directors.	Winter of 2003	Complete

<p>Establish standards/guidelines for due diligence analysis of potential investments developed and adopted by APICDA and AJV Board of Directors.</p>	<p>Winter of 2003</p>	<p>Complete</p>
<p>Evaluate newly developed corporate governance structure and provide recommendations for improvement of governance considered.</p>	<p>Spring of 2005</p>	<p>Complete</p>
<p>Define responsibilities for the completion of strategic assessment planning.</p>	<p>Summer of 2003</p>	<p>Complete</p>
<p>Board affirms APICDA purpose and defines long-term vision for the corporation. Completion date</p>	<p>Fall of 2003.</p>	<p>Complete</p>
<p>The APICDA board trained on use of strategic plan and instrument panel to monitor performance of projects.</p>	<p>Fall of 2003</p>	<p>Completed</p>
<p>Strategic investment completed using new Board of Directors investment criteria.</p>	<p>Winter of 2003</p>	<p>Completed</p>
<p>Develop corporate internal assessment and priority initiatives.</p>	<p>Spring of 2004</p>	<p>Completed</p>
<p>Identify planning of strategic and internal improvement initiatives.</p>	<p>Spring of 2004</p>	<p>Completed</p>
<p>Provide an effective method for tracking progress on initiatives developed and implemented.</p>	<p>Spring of 2004</p>	<p>Completed</p>
<p>Identify responsibilities, authorities, and accountabilities of each management member.</p>	<p>Summer 2003</p>	<p>Completed</p>

Clarify and define new management job descriptions implemented and disseminated.	Fall of 2003	Completed
Identify method to measure performance on accountabilities defined and implemented.	Fall of 2003	Completed
New management structure evaluated by management team and by staff.	Spring of 2004	Completed
Establish criteria for projects to be managed by new internal project management system.	Summer of 2003	Completed
Develop a template/process for completion of due diligence on new ventures planned and approved by the board of directors.	Fall of 2003	Completed
Provide alternatives for project management system researched and system selected.	Fall of 2003	Completed
Develop a template/process for due diligence on new ventures implemented.	Winter of 2003	Completed
Incorporate policy/procedure for launching projects that defines structure and authority implemented.	Winter of 2003	Completed
Project management system implemented	Spring 2004	Completed
Monitor Cannon Fish Company investments to ensure operation maximizes financial return	Ongoing	Ongoing
Monitor employment opportunities at	Ongoing	Ongoing
Cannon Fish Company for local and regional residents, as well as residents from other CDQ regions.	Ongoing	Ongoing

Monitor Cannon Fish Company's activities to ensure compliance with all federal and state regulations.	Ongoing	Terminated
---	---------	------------